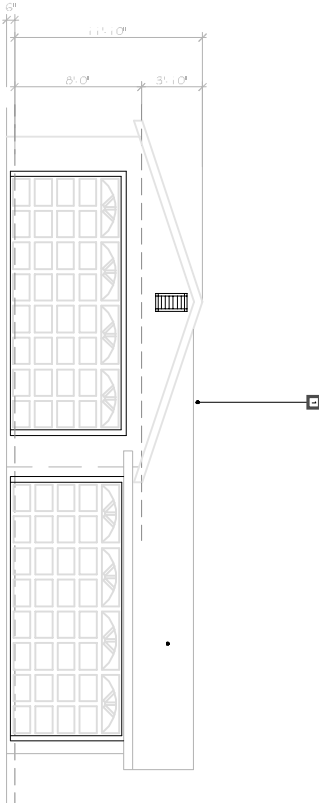
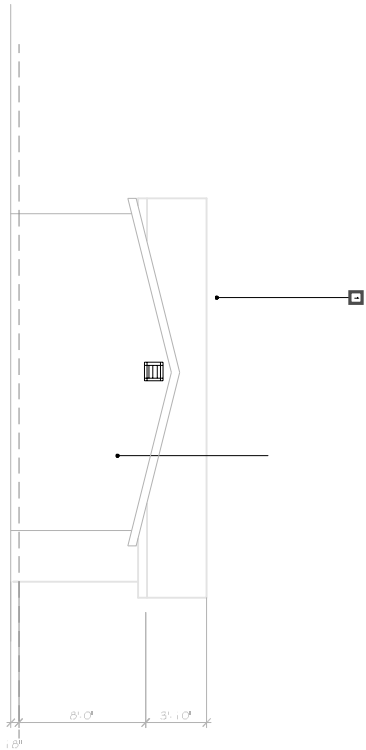
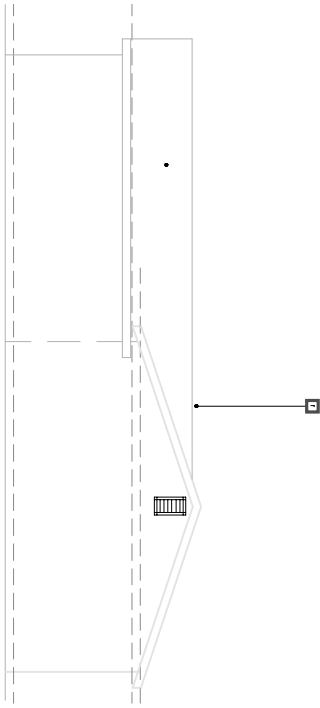
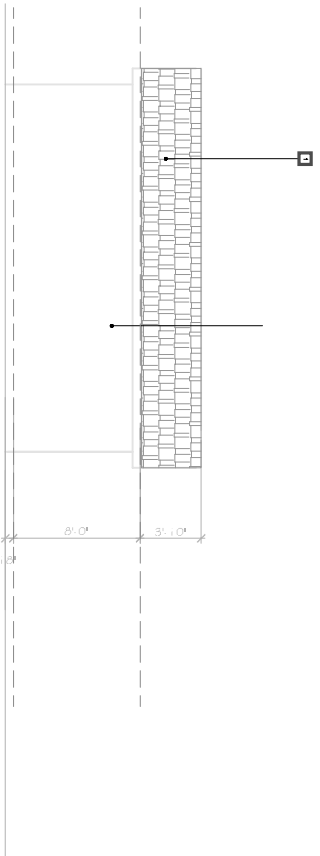


- COMPOSITION SHINGLE CLASS B MIN. MOIRE BLACK, MATCH EXISTING, TAMKO ROOFING INC., ICC# ESR-1841
- 7/8" STUCCO, LA HBRP, X-48 WEEDONBROOK, BASE 100, TEXTURE AND COLOR MATCH EXISTING
- 14"x24" VENT PAINTED TO MATCH STUCCO COLOR
- 24"x24" DORMER VENT PAINTED TO MATCH ROOF COLOR



SOUTH ELEVATION
 2-OR GARAGE

