

(optional)



Pressure Tank
(PT-tank02)

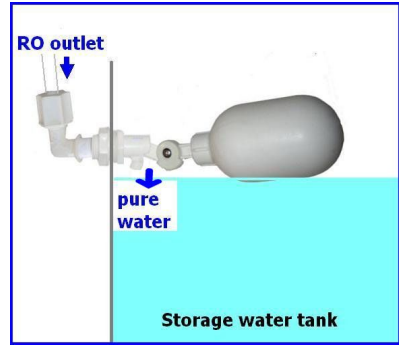
Pure Water Outlets (optional)



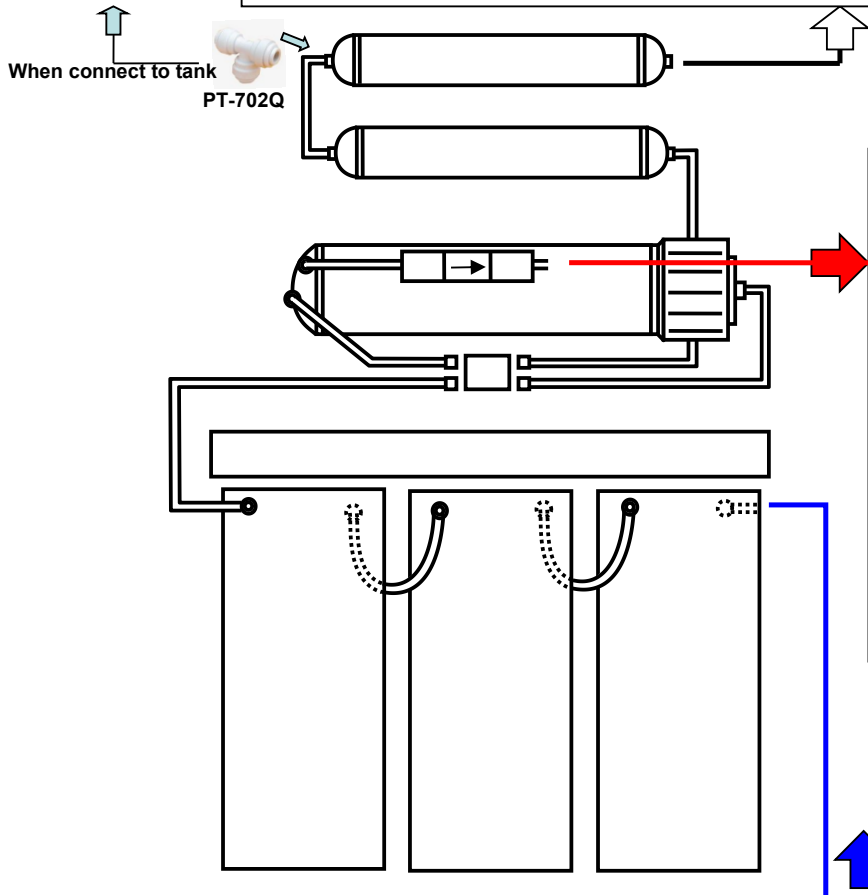
Ice Maker
(PT-icemaker)



Faucet
(PT-FAU)



Float Valve
(PT-FV)



RO System Diagram

Waste Water Outlet

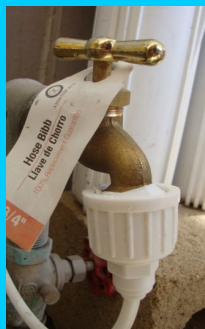


Drain Saddle Valve

Tap Water Feeders (optional) cold water only



Under Sink
(PT-310) (PT-38T)



Garden Hose
(PT-Q34A)

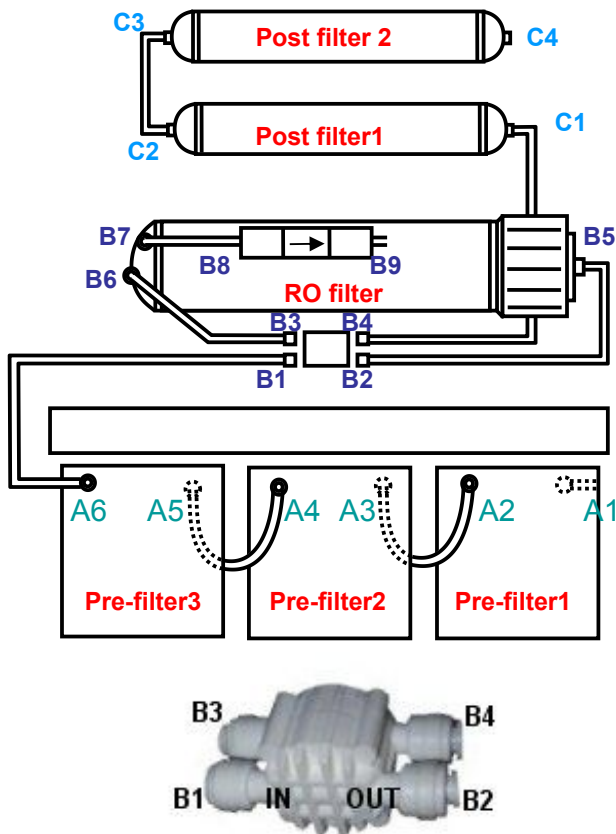


Bathroom Faucet
(PT-aerator-Q)



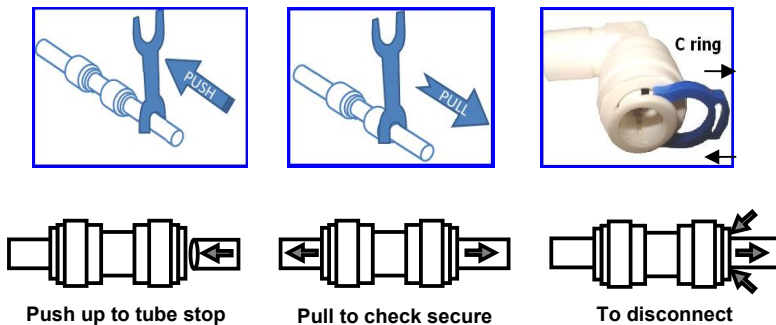
Shower Head
(PT-3way)

Whole RO System Quick Connectors Diagram



position	parts number	connection
A1	PT-4040Q	incoming water source in
A2	PT-4040Q	1th stage out
A3	PT-4040Q	2nd stage in
A4	PT-4040Q	2nd stage out
A5	PT-4040Q	3rd stage in
A6	PT-4040Q	3rd stage out
B1	PT-ASOVQ	to 3rd stage out
B2	PT-ASOVQ	to RO membrane
B3	PT-ASOVQ	to check valve
B4	PT-ASOVQ	to 5th stage
B5	PT-4040Q	RO membrane in
B6	PT-CV	to ASOVQ
B7	PT-1144Q	to Flow Restrictor
B8	PT-WASH	Flow Restrictor In
B9	PT-WASH	Flow Restrictor out, to drain
C1	PT-4040Q	5th stage in
C2	PT-4040Q	5th stage out
C3	PT-4040Q	6th stage in
C4	PT-4040Q	6th stage out, pure water output

The Quick Connector Connect / Disconnect Quick View



To connect standard quick push-in fittings:

- (1) If there is a blue C ring on it, remove it first.
- (2) Insert tube all the way into the socket.
- (3) Pull the tube to check security.

To disconnect standard quick push-in fittings:

- (1) If there is a blue C ring on it, remove it first.
- (2) Push in the collet, at the same time.

for sanitary reasons, you MUST insert membrane by yourself

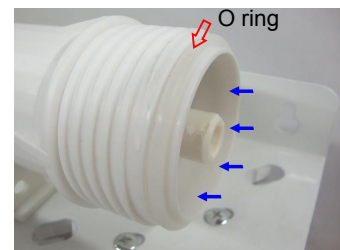
The RO Membrane Installation Quick View



Remove tube and cap from RO housing



Insert the RO membrane into housing, 2 black rings go in first



must be inserted completely
O ring must be in correct position

Warning: do NOT connect to hot water supply, and must flush membrane before use the water