

Model number: POQ-4 series, POL-4 series

Please go to www.purewaterclub.com to see/download the colored version

Pure Water Outlet

Waste Water Outlet

Package contains:

- Portable RO system
- A membrane
- 12 ft 1/4" RO tube
- Faucet adapter
- Collet release tool (fork)

RO System parts number

1	4040Q	6	Check Valve
2	4040Q	7	4040Q
3	4040Q	8	4040Q
4	4040Q	9	4041Q
5	4040Q	10	Flow restrictor

*For replacement filters, please check the model **FS-POQ** (or scan the QR code)

bathroom sink faucet

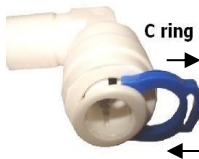
Faucet Adapter (PT-aerator-Q)

1/4" RO tube

Incoming water source (Cold water only)

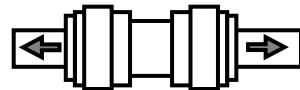
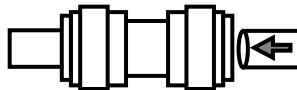
Before you connect this RO, you must learn how to properly connect/disconnect quick push-in fittings. The fitting CAN get damaged if inserted tubes are pulled out by force.

If the fitting comes with a C ring on it, remove it first.



TO CONNECT

- 1 Insert tube all the way into the socket (push it in)
- 2 Try to pull the tubes to check for security.

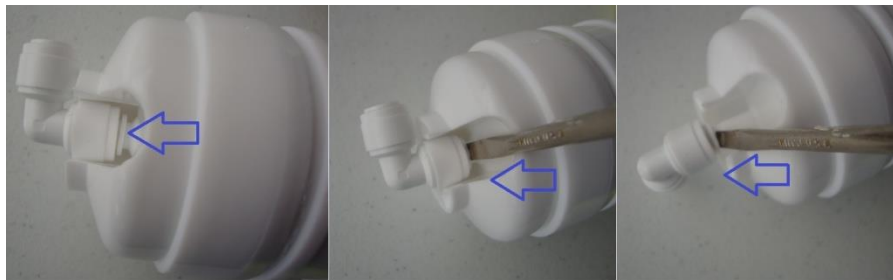
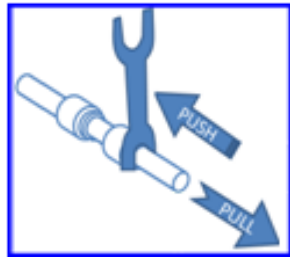
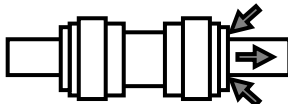


TO DISCONNECT

Optional: You may find a collet release tool (fork) to be useful.



To disconnect, all you need is to push on the collet, then pull out the tube.



use flat screw driver to remove fitting

If using a fork (release tool), push it against the collet. Then pull out the tube.

Installation Guide

Installation Step 1: Assembling Water Feeder

Simple plumbing knowledge and ability is required to install the system (or you may hire a plumber).
You may need a towel, bucket, 2 adjustable wrenches, Teflon tape, screwdriver, and drill.

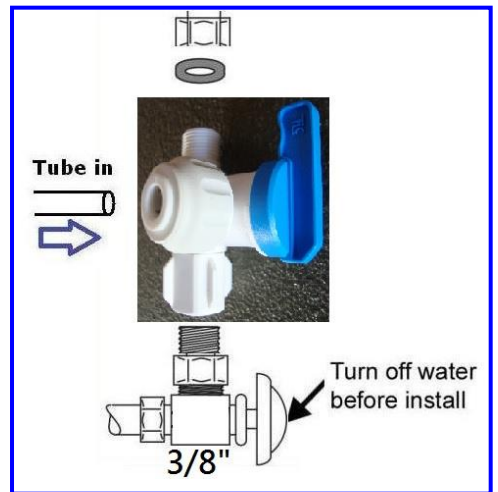
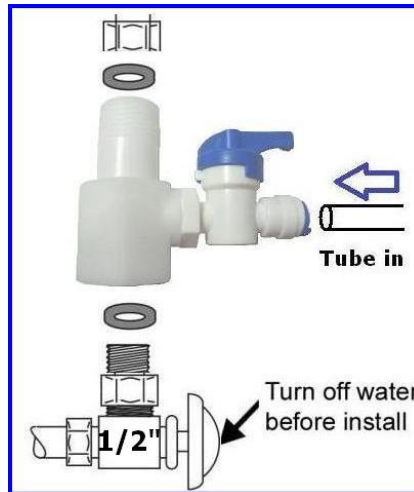
UNDER-SINK (OPTIONS A, G)

- 1/2" (or 3/8") inlet 1/2" (or 3/8") outlet 1/4" RO tube with ball valve
- Works for kitchen/bathroom under sink 1/2" (or 3/8") shut off valve

A PT-310



- 1) Find the shut-off valve under-sink (cold water only) turn off the water and remove the faucet supply hose from the valve.
- 2) Measure the inner diameter of the pipe (3/8" or 1/2".)
- 3) Wrap some Teflon tape on the thread.



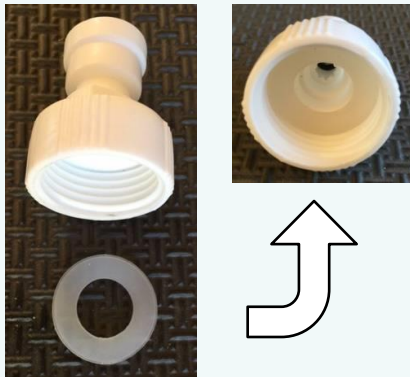
G PT-38BV



Install water feeder as picture, make sure the O-ring is inserted in the proper position. Use some Teflon tape on the thread.

GARDEN HOSE / LAUNDRY (OPTION B)

B PT-Q34A



- garden brass hose bibb/spigot or laundry plastic split adapter
- 3/4" inlet 1/4" tube outlet
- make sure to insert o-ring into proper position (see left)
- can screw on the adapter by hand (no tools required)

