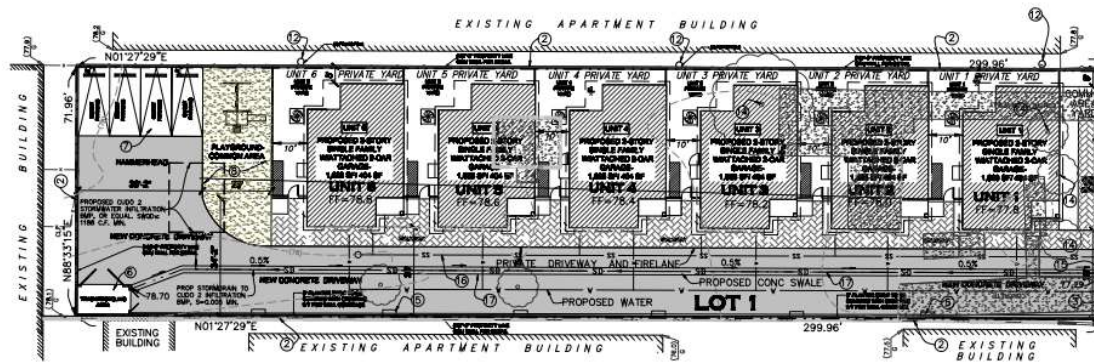


**LEGEND**

- ① 6' HIGH SOLID WOOD FENCE. (SEE SITE PLAN FC
- ② 6' HIGH CMU PROPERTY LINE WALL. (SEE SITE F
- ③ DUEL WROUGHT IRON ENTRY GATE. (SEE SITE PI
- ④ EXISTING DRIVEWAY AND GUTTER TO BE REMOVE AND GUTTER. (SEE SITE PLAN FOR SPECIFICATIO
- ⑤ PLANTER. (SEE SITE PLAN FOR SPECIFICATIONS)
- ⑥ TRASH ENCLOSURE. (SEE SITE PLAN FOR SPECIF
- ⑦ 9' x 18' GUEST PARKING SPACES. (SEE SITE PL
- ⑧ KID PLAYGROUND AREA. (SEE SITE PLAN FOR SI
- ⑨ REMOVE EXISTING CONCRETE DRIVE AND REPLAC
- ⑩ JOIN EXISTING WATER
- ⑪ JOIN EXISTING SEWER
- ⑫ EXISTING POWER POLES. (TO REMAIN. PROTECT I
- ⑬ FRONT YARD FENCE. (SEE SITE PLAN FOR SPEC
- ⑭ EXISTING TREES TO BE REMOVED.
- ⑮ PROPOSED CATCH BASIN DRAINS TO CUDO 2 INI
- ⑯ BMP. OVERFLOW TO SURFACE FLOW TO STREET.
- ⑰ PROPOSED 8" SEWER
- ⑱ PROPOSED 24" CONC. RIBBON GUTTER. MIN. 1% TO CATCH BASIN



**Legend**

- COR = CORNER
- FL = FLOWLINE
- GM = GAS METER
- GV = GAS VALVE
- PP = POWER POLE
- SLT = STREET LIGHT
- SMH = SEWER MANHOLE
- T = TREE
- TC = TOP OF CURB
- VAR = VARIES
- WM = WATER METER
- = PROP. INGRESS & EGRESS EASEMENT AND PRIVATE DRIVEWAY AND FIRELANE.
- SS — = PROPOSED SANITARY SEWER
- W — = PROPOSED WATER

**UTILITY NOTE**

THE UTILITY INFORMATION SHOWN HEREON IS LIMITED TO ACCESSIBLE SURFACE UTILITIES ONLY. THE INFORMATION IS PER FIELD MEASUREMENTS. NO LIABILITY IS ASSUMED OR INFERRED BY CRC ENTERPRISES INC. AS TO THE EXISTENCE OF ANY UNDERGROUND, OR INACCESSIBLE UTILITY STRUCTURES.